



MR 4(Q1)/ 9(Q1)/ 12(Q1)



Quality Hot and Cold Lamination
Carrier Free Operation
Hot & Cold Lamination
Temp Control



MR 4(Q1)/ 9(Q1)/ 12(Q1)

- ◆ Quality hot and cold lamination
- ◆ Low cost machines built to GMP exacting standards
- ◆ Compact and portable, stylish and simple to use
- ◆ Versatile Professional laminators
- ◆ Matchless safety profile - meets European/USA safety standards
- ◆ User-friendly operation for quick, quality results
- ◆ Perfect results with a wide range of document sizes in variety of thickness
- ◆ Carrier-free operation



ISO 9001:2000 CERTIFICATE

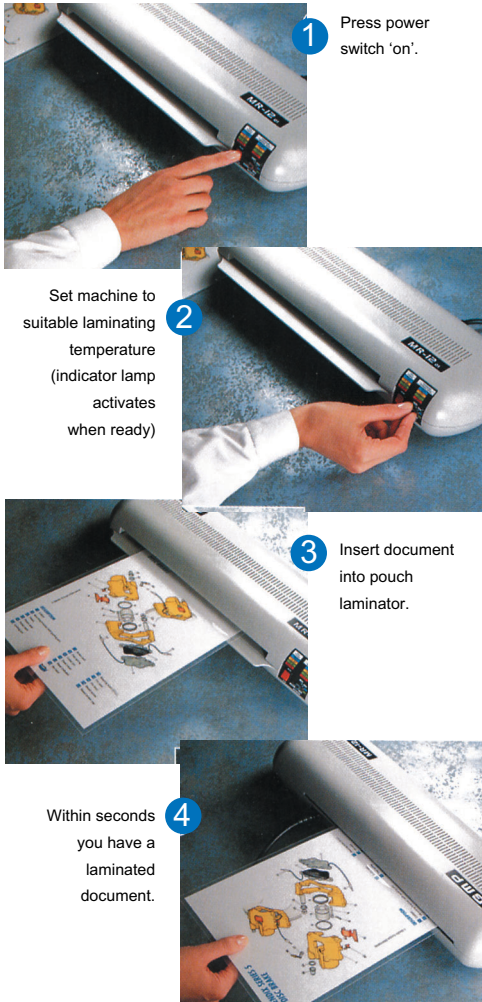


CERTIFICATE NUMBER: RM0857

MR 4(Q1)/ 9(Q1)/ 12(Q1)

Pouch Laminator

Guide to lamination



Presenting the perfect image - time after time...

The versatile MR range of laminators enables you to achieve professional results every time - whatever the application. In schools and colleges, offices, shops and restaurants, at home - in fact anywhere, MR laminators produce perfect, trouble-free results.

Built to the highest specifications, MR laminators from GMP can enhance your image on business cards, ID cards, luggage tags, membership cards, certificates, posters and other documents in a variety of size up to A3.

- 3 model range handles paper sizes from credit card to A3
- Carrier-free operation
- Ideal for all standard laminating applications
- Temperature guide table provided on laminator
- casing for ease of use
- Laminated documents are resistant to chemicals, oil and grease
- Waterproof and tamper-proof results every time Photolamination with cold film

Specifications

Model Name	MR-4(Q1)	MR-9(Q1)	MR-12(Q1)
Laminating Speed	720mm/min	720mm/min	720mm/min
Laminating Width	100mm	230mm	320mm
Laminating Films	75mic~250mic	75mic~250mic	75mic~250mic
Thickness of substrate(Paper)	80g/ m ² ~250g/ m ²	80g/ m ² ~250g/ m ²	80g/ m ² ~250g/ m ²
Power Requirements	220~240V, 50/60Hz	220~240V, 50/60Hz	220~240V, 50/60Hz
Power Consumption	200W, 0.95A	400W, 1.9A	450W, 2.0A
Warm Up Time	3 minutes	3 minutes	3 minutes
Heating System	Heat Plate (Mica Heater)	Heat Plate (Mica Heater)	Heat Plate (Mica Heater)
Operating Temperature	160 °C Max.	160 °C Max.	160 °C Max.
Speed Control	Fixed	Fixed	Fixed
Temperature Control	Knob & Volume	Knob & Volume	Knob & Volume
Dimensions(WxLxH)	300 x 185 x 85mm	425 x 185 x 85mm	500 x 185 x 85mm
Type of Main Motor	Shading Pole Gear Motor t15	Shading Pole Gear Motor t15	Shading Pole Gear Motor t15

Copyright GMP 2004. All rights reserved. Reproduction by any means of any image in this catalogue is prohibited without the prior consent of GMP and its authorized agent

GMP reserves the right to alter change specifications without prior notice.

- *Chromonex®: PP and PET composite Film
- *Photonex® : Heat Seal Laminating utilizing PVC material Film
- *Polynex® : Heat Seal Laminating utilizing OPP material Film
- *Micronex® : Heat Seal Laminating utilizing ultra thin dry overcoating Film