



EXCELAM-Q1100RS/Q1670RS

Large Format Roll Laminator



EXCELAM-Q1100RS/Q1670RS

- ◆ Easy to use for outer rewinder tension control
- ◆ Designed for dual film core and stronger unwinder shaft
- ◆ Enhanced clutch function and easy to use for outer pressure tension knob
- ◆ Hot and cold lamination
- ◆ Speed and temperature control
- ◆ Automatic power shut-off and stand-by system
- ◆ Top and bottom independent temperature control
- ◆ Cross cutter for limited web removal



ISO 9001:2000 CERTIFICATE



CERTIFICATE NUMBER: R0M0877

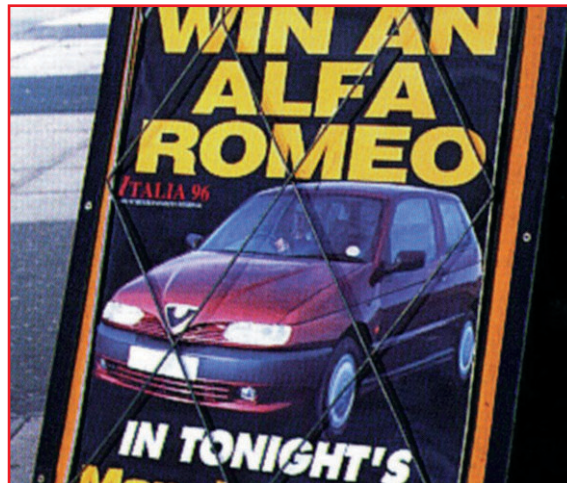
 **GMP CO., LTD.**
www.gmpro.com

EXCELAM-Q1100RS/Q1670RS

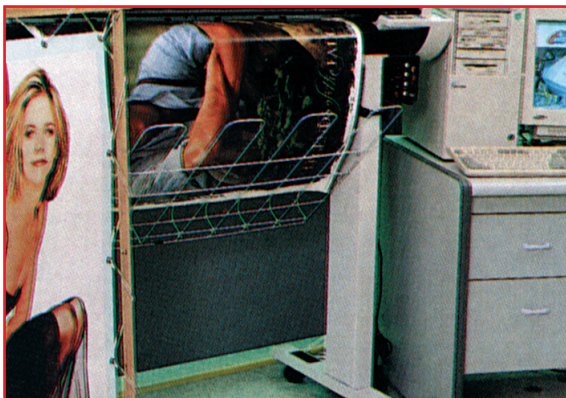
Roll Laminator

Standard Features

- Tension Control on Film Mandrel
- Speed Setting from 3m/min
- Sidelay on Feed Table
- Pre-set 13mm Gap for FOAMBOARD® Mounting
- Variable Pressure Control
- No Special Power Supply Needed. Only Requires Standard Household Power Outlet



Superb laminating results on a wide range of standard laminating films from 25mic to 500mic, including PHOTONEX® soft touch film and CHROMONEX® hard touch film.



Features include variable speed, temperature and pressure control, as well as LCD panel, pre-set functions, mounting facility, pouch lamination and cold film setting.

EXCELAM-Q1100RS/Q1670RS are the perfect machines for wide range of service in a copy shop environment or in a copy center, graphic printing shop and photo shop. Ideal for laminating posters, inkjet prints, leaflets, maps wide photographs with superb results, and for truly professional mounting up to 13mm-thick GMP LAMIBOARD®.

Specifications

Model Name	EXCELAM-Q1100RS	EXCELAM-Q1670RS
Laminating Speed	3m/min	3m/min
Laminating Width	1100mm	1670mm
Laminating Films	25mic-500mic	25mic-500mic
Thickness of substrate(Paper)	80g/㎡~350g/㎡	80g/㎡~350g/㎡
Thickness Mount	13mm	13mm
Power Requirements	220-240V, 50/60Hz	220-240V, 50/60Hz
Power Consumption	3300W, 15A	3300W, 15A
Warm Up Time	22 minutes	25 minutes
Heating System	Hot Roller Internal Infrared Heater	Hot Roller Internal Infrared Heater
Operating Temperature	150℃ Max.	150℃ Max.
Speed Control	Key Pad	Key Pad
Temperature Control	Key Pad	Key Pad
Pressure Adjustment	Manual (8step)	Manual (8step)
Film Core	19-77Dual	19-77Dual
Cooling System	Blower	Blower
Dimensions(WxLxH)	1500 x 710 x 1250mm	2000 x 710 x 1250mm
Type of Main Motor	DC W-Geard Motor /36V80	DC W-Geard Motor /36V80
Type of Rewinder Motor	Link to Main Motor	Link to Main Motor

Copyright GMP 2004. All rights reserved. Reproduction by any means of any image in this catalogue is prohibited without the prior written consent of GMP and its authorized agent

GMP reserves the right to after change specifications without prior notice.

- *Chromonex®: PP and PET composited Film
- *Photonex®: Heat Seal Laminating utilizing PVC material Film
- *Polynex®: Heat Seal Laminating utilizing OPP material Film
- *Micronex®: Heat Seal Laminating utilizing ultra thin dry overcoating Film